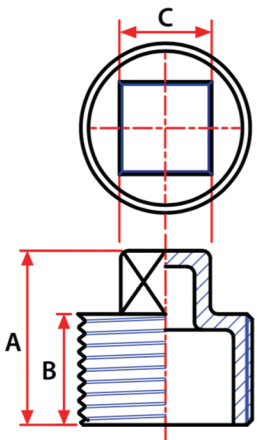


MSS-SP114 HEAVY PATTERN STAINLESS STEEL FITTINGS

SQUARE HEAD PLUGS



Item ID 304	Item ID 316	Size	Pkg Qty	Approx Weight	A	B	C
SS304-67601	SS316-67601	1/8"	25	0.0165	0.58	0.36	0.27
SS304-67602	SS316-67602	1/4"	25	0.0331	0.69	0.42	0.36
SS304-67603	SS316-67603	3/8"	25	0.0551	0.76	0.46	0.42
SS304-67004	SS316-67004	1/2"	25	0.0661	0.90	0.54	0.54
SS304-67006	SS316-67006	3/4"	25	0.1102	1.02	0.60	0.60
SS304-67010	SS316-67010	1"	25	0.1984	1.19	0.72	0.78
SS304-67012	SS316-67012	1 1/4"	25	0.2926	1.30	0.77	0.90
SS304-67014	SS316-67014	1 1/2"	25	0.3748	1.38	0.79	1.07
SS304-67020	SS316-67020	2"	10	0.6113	1.49	0.84	1.26
SS304-67024	SS316-67024	2 1/2"	5	1.0516	1.72	1.02	1.43
SS304-67030	SS316-67030	3"	5	1.6182	1.84	1.08	1.62
SS304-67040	SS316-67040	4"	1	2.8616	2.11	1.16	2.14

DOMESTIC AND IMPORTED FITTINGS

Stainless steel fittings are investment castings and Trenton Pipe carries a full size range that is available in stock from 1/8" – 4" in both 304 and 316 grades of stainless steel.

All fittings are threaded to NPT standard in compliance to **ASME B1.20.1**, castings are made in accordance to **ASTM A351** and all fittings are heat treated and tested in accordance to **ASTM A262**.



(800) 257-9559

Fax: (866) 706-5260

sales@trentonpipe.com